

Performance Dashboards with

EspressReport[®] ES

Free Development resources and
Empower end users with
Intuitive point-and-click,
Drag-and-drop interface
Zero training



Introduction

In this globally competitive business environment, an organization must be nimble and be able to adjust and fine-tune business strategies, business models and practices based on up-to-date information on the economy and business performance metrics. While economic data is readily available in the news media, monitoring status of business performance requires advanced Business Intelligence tools that can transform the corporate database silos into easy-to-understand metrics and reports. EspressoReport®ES from Quadbase Systems (ERES) is such a tool that empowers the executive or the business analyst to monitor “Key Performance Indicators” anytime, anywhere for decision support and analysis.

EspressoReport®ES’s Dashboard Builder is a simple, thin-client, drag-and-drop/point-and-click interface that allows non-technical users to easily create presentation quality KPI dashboards without using any IT or development resources. Finished dashboards are then immediately published to users across the enterprise.

Key Features

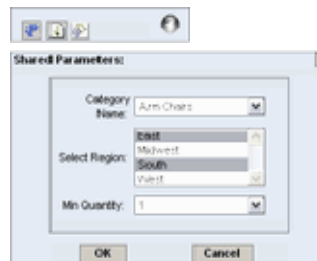
ERES’s dashboards are dynamic and fully actionable. Unlike some competitors dashboards which are nothing more than some static charts and reports shown on a panel, ERES’ s dashboards are highly interactive. The key distinguishing features are as follows:

Shared Parameters

Reports and charts with parameters can be run individually with different parameter values on the dashboard. In addition, you can also set up shared parameters such that the user only needs to supply one set of values for the shared parameters to see the reports/charts refreshed with filtered data on the dashboard.

There are several options for laying out shared parameters and for users to enter parameter values.

- 1) Simply type in the value for a parameter if the original parameter in the report/chart is unmapped, i.e. designed to be typed in at run-time.
- 2) If the parameter is mapped to a database, function, select statement or is custom defined, the parameter value(s) can be selected from a list box whether it’s single value or multi-value parameters.



- 3) If the parameter is mapped to a database, function, select statement or is custom defined, and the number of distinct values for the parameter is rather limited, those values can be listed as labels, images, radio buttons, or check boxes (if multi-valued).



- 4) A range variable can be assigned to a pair of parameters for the same field. The most common application is for setting up date ranges, i.e. start and end dates. A set of pre-defined date range variables are included so that the user can pick values given by variables such as “today”, “yesterday”, “last week”, “last month,” “month to date”, “last year”. “last quarter”, and so forth.



Unlimited Drill-Down

Drill-down links can be set up on data points on charts and reports so that users can drill into detailed information about certain data points. Since reports and charts can have their own drill-down structures, there is no limit to the number of drill-down levels.

Sales Dashboard

Top Customers

Click the top customer by \$M value for the subregion region from Jan 01, 2003 to Oct 31, 2003

Customer Profile: Woodview Furniture, 4500 Central Ave, Morgan, PA 15067

Order History:

Order ID	QUANTITY	Product Name	Unit Price	TOTAL
14175	6	Wicker Chair	\$44.00	\$264.00
12	12	Wicker Chair	\$49.00	\$588.00
12	12	Wicker Chair	\$142.00	\$1,704.00
				\$2,556.00

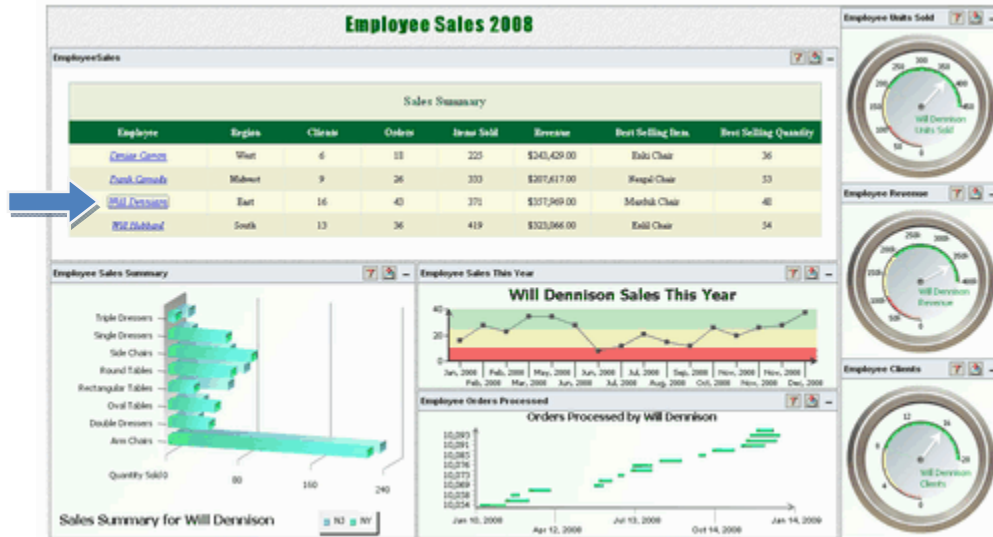
Order History (continued):

Order ID	QUANTITY	Product Name	Unit Price	TOTAL
14186	6	Wicker Table	\$1,200.00	\$7,200.00
17	17	Wicker Chair	\$139.00	\$2,363.00
				\$9,563.00

Woodview Statement

Element Linking

In addition to setting up drill-downs to reports and charts, you can also set up links to other elements on the dashboard. So when the user click on a data point on a chart or report, one or more charts/reports on the dashboard will be refreshed with newly filtered data.



Folders

ERES's dashboards can contain folders. You can put a group of reports and charts in a folder on the dashboard. As such, you can pack more information in the dashboard. The reports and charts in the folder can be completely independent. They can also be used to display the same data in different views, e.g. different chart types and reports as different views into the same data.



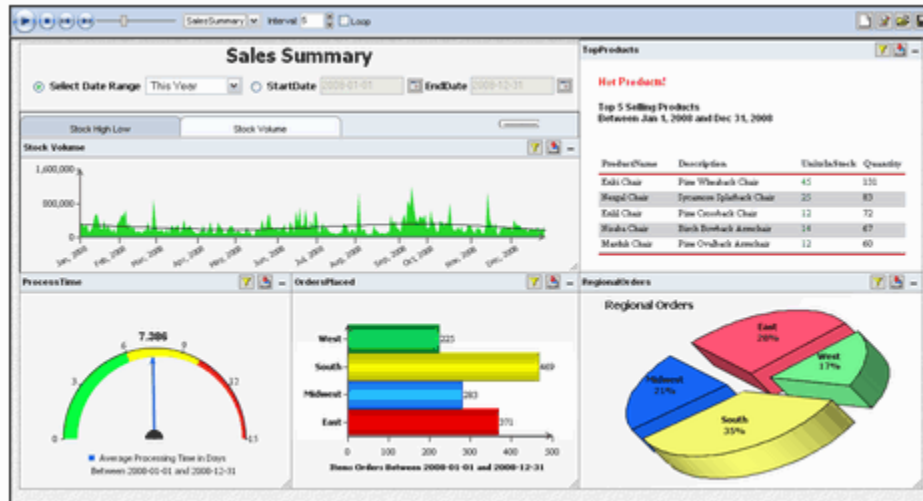
Automatic Refresh

You can set up a refresh interval such that the elements on the dashboard will be refreshed with new data periodically.



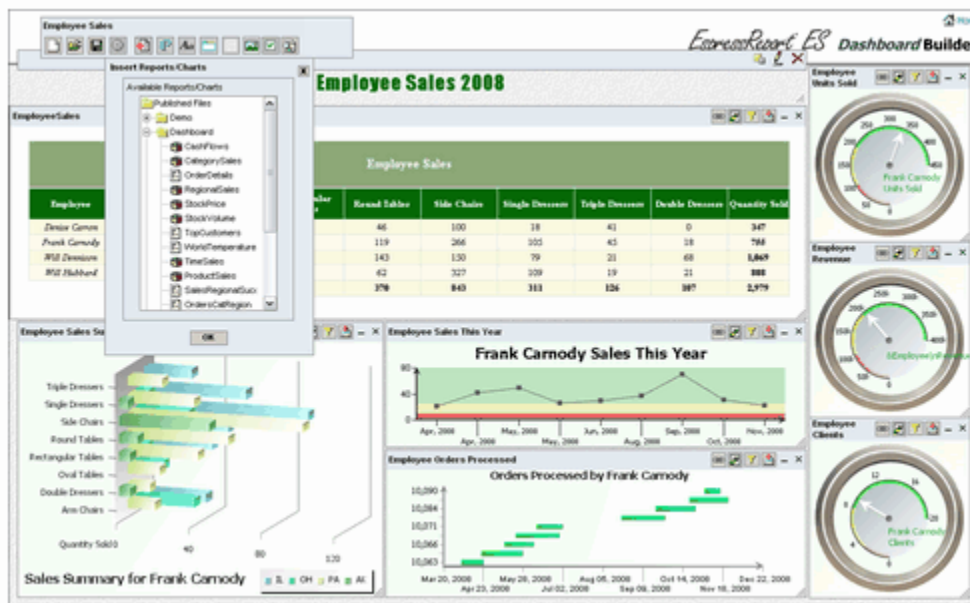
Slide Show

ERES allows you to select a group of dashboards and make a slide show for it. This is a great way to enhance management presentations of Key Performance Indicators.

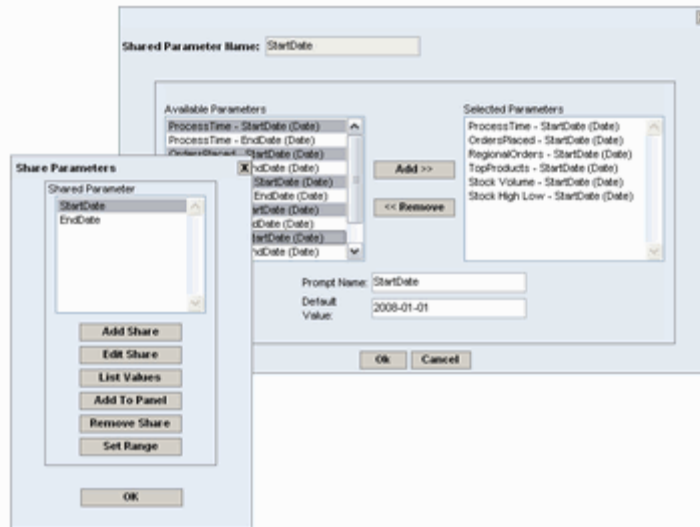


The Dashboard Builder

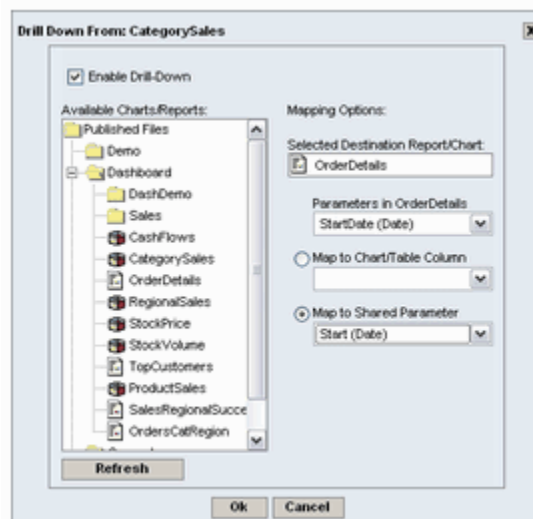
The core of the ERES dashboard feature is the Dashboard Builder. To create a dashboard, simply add the available charts and reports in the Organizer.



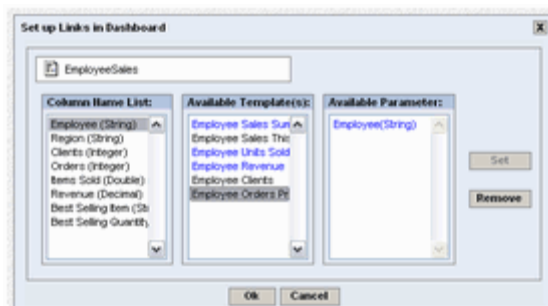
Once you have the reports/charts inserted into the dashboard, you can set up shared parameters provided that some of the elements have similar parameters that can share the same values. The parameter layout options are given above.



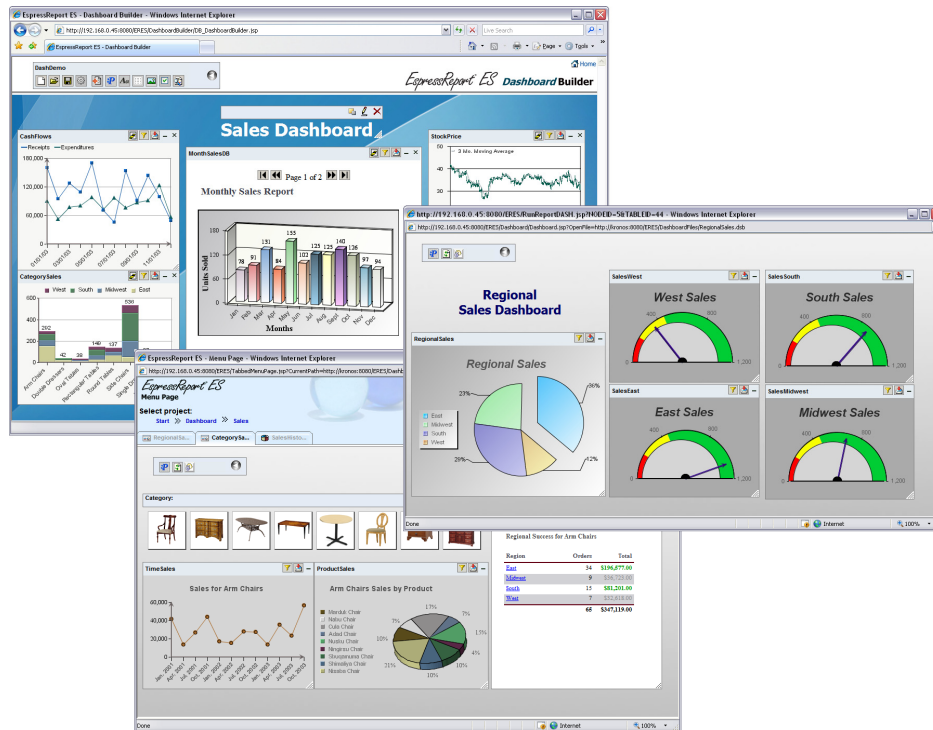
To add a drill-down chart or report to an element, simply click on the “add/modify DrillDown” button. The drill-down dialog will pop up. Select a chart/report that has a matching parameter for drill-down. If the chosen chart/report has other parameters, they must be mapped to shared parameters.



To add a link to an element, click on the “add/modify link” button. A dialog will pop up for you to choose the column for linking. If there are parameterized reports/charts in the dashboard, they will be shown in the “Available Templates” panel. You can then select the ones with matching parameters for linking.



The look and feel of the dashboard is highly customizable. You can add labels, background color, background images to the dashboard. Text font, size, color can all be customized. The parameter panel can be customized in the same way.



Deployment

Once the dashboard is saved in the Organizer, it is immediately available for publishing in the ERES Menu Page. URL to the dashboard can also be generated for publishing in your own web page. Deployment using the slide show feature is yet another way to publish the dashboards.

Conclusion

EspressoReport® Enterprise Server (ERES) provides a robust, centralized reporting architecture that leverages the functionality of EspressoReport's pure Java reporting engine and extends it to the enterprise. With built-in automatic report delivery capabilities, end-to-end user/data security, advanced ad-hoc query and analysis features, and scalable pure Java architecture, ERES leapfrogs the competition and provides an ideal platform for easily creating and delivering information-rich KPI dashboards to a wide audience of business users without the need for IT development effort.

For more information about these tools, please visit www.quadbase.com.