

Ad-Hoc Reporting with *EspressReport® ES*

**Free Development resources
And empower end users
With simple interfaces and
Zero training**

Overview

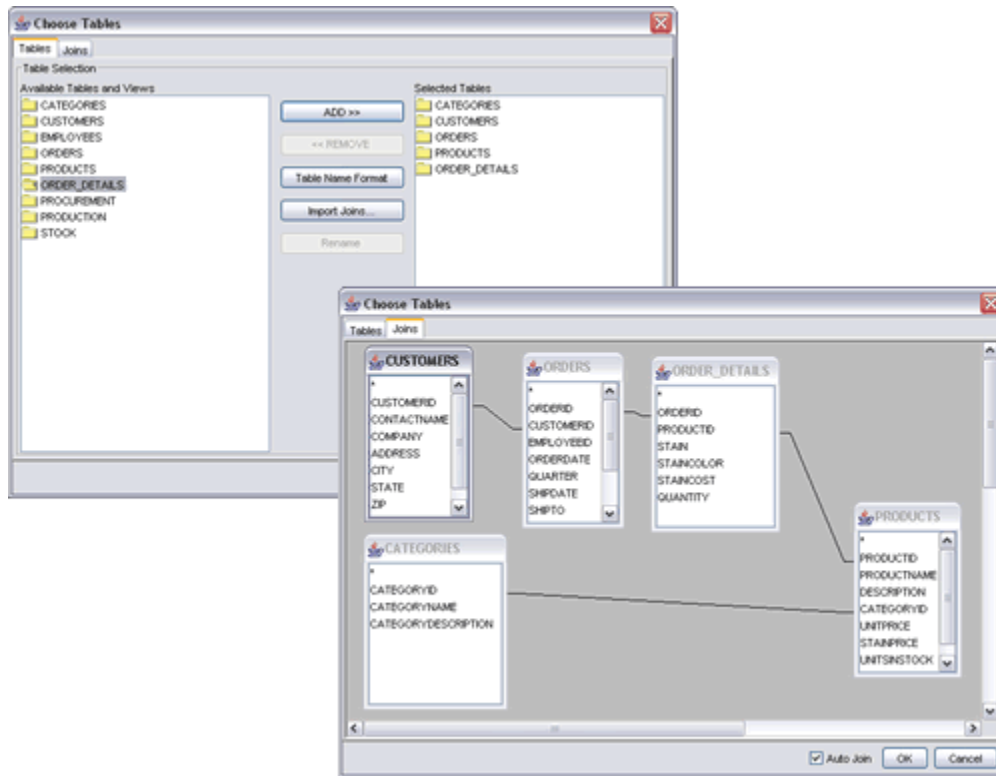
In enterprise reporting environments, canned reports can only go so far. Users and groups within an organization often have many different and unique reporting requirements. Using IT or development resources to satisfy these individual requirements can be time-consuming, repetitive and decrease productivity. The best option is to have users create their own reports. Many ad-hoc reporting solutions, however, offer complex tools with a feature set geared towards high-level business analysts. Average users cannot begin to approach the functionality of these solutions without extensive training.

EspressReport® ES from Quadbase Systems provides simple, thin-client, query and reporting interfaces that allow users across the enterprise to create queries, build reports from any data source, and publish the results without any training.

Data Views – Defining Meta Data

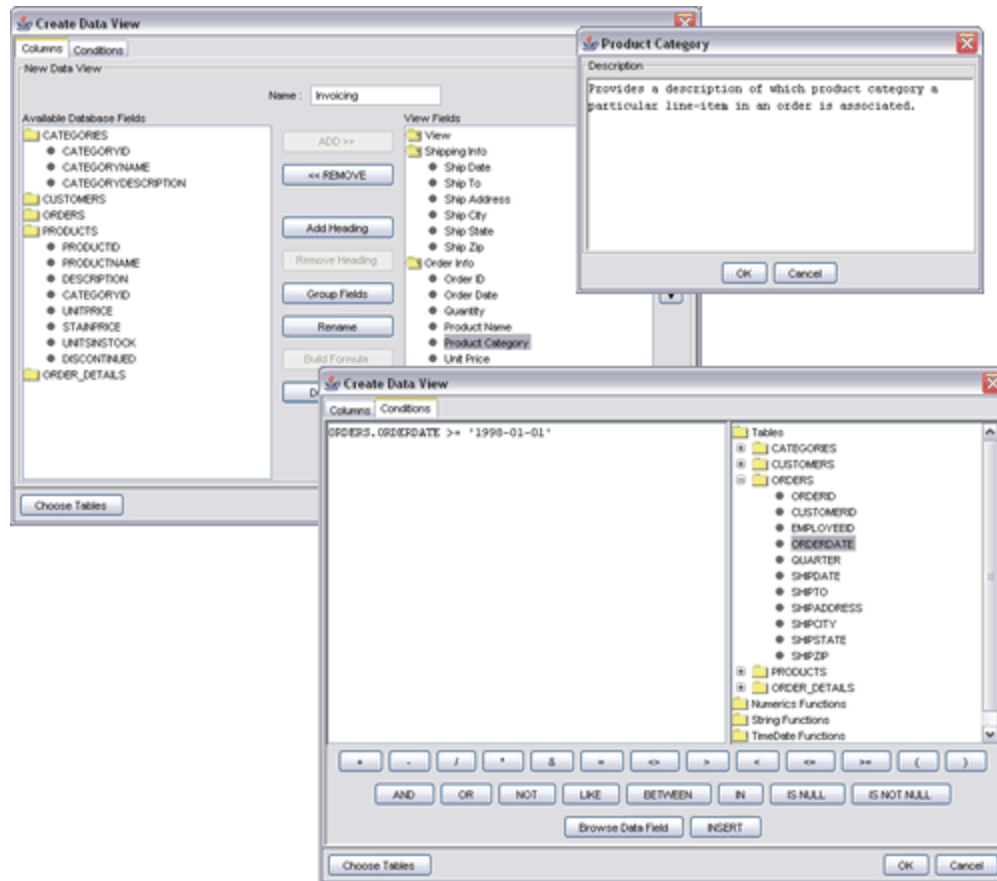
Data Views are custom local views of enterprise information presented in simplified business terms. With this powerful feature, users are insulated from database complexity, and can quickly build queries by selecting fields described in terms they understand.

Data Views are created within the Organizer as part of a data registry. An administrator first selects and joins the database tables that will be available to end users.



Once tables have been selected and joined, the administrator then selects a field set from which end users will select. Selected fields can be aliased and grouped under custom headings, allowing an organizational structure to be implemented along business lines, independent of the underlying database structure. In addition, descriptions can be entered and stored with any field.

Permanent filtering conditions can be applied to the view. Using this feature, administrators can limit the scope of data that can be retrieved when users write queries against the view.

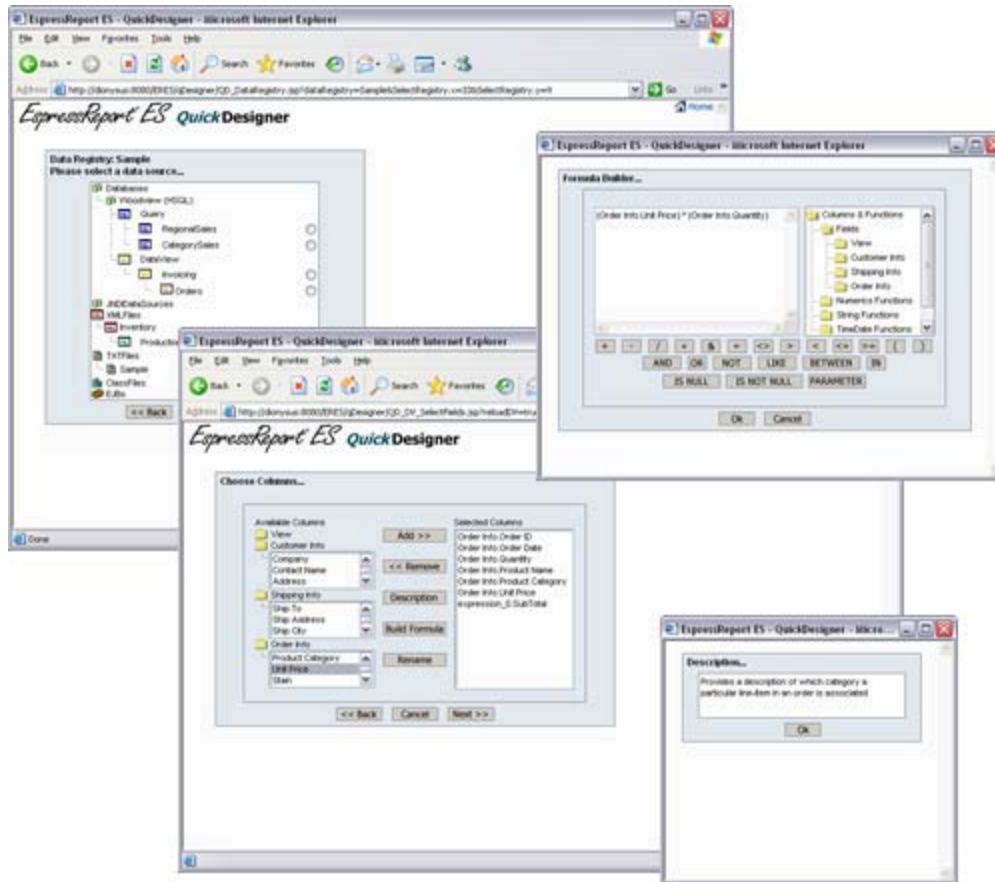


Once a view is complete, end users can create queries by selecting from the pre-defined list of fields. Users can create computed fields, perform sorting and aggregation, and add filters and parameters to the query. Internal SQL optimization features ensure that only the appropriate tables and joins are used when an end user issues a query, and that queries return as quickly as possible.

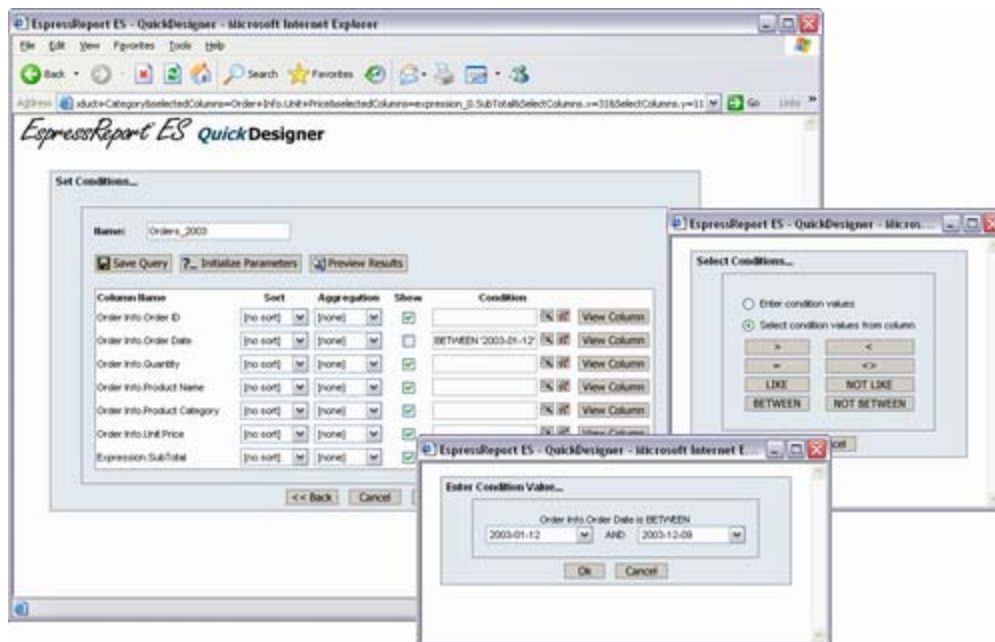
QuickDesigner – Zero Client Query and Reporting

Ad-hoc queries and reports in EspressoReport ES are created through the QuickDesigner interface. This HTML-based thin-client tool allows users to create reports and charts from any defined enterprise data source, or build queries against Data Views. The simple point-and-click interface provides an extremely short learning curve, and allows users to quickly master basic reporting functions.

Upon loading QuickDesigner, users are presented with a view of defined data sources. Any data source can be selected for a report, or users can select a Data View to create a query. When creating a query, users are first presented with a list of all the defined fields in the data view, grouped under headings. Users can select fields, and launch the formula builder to create a computed column.



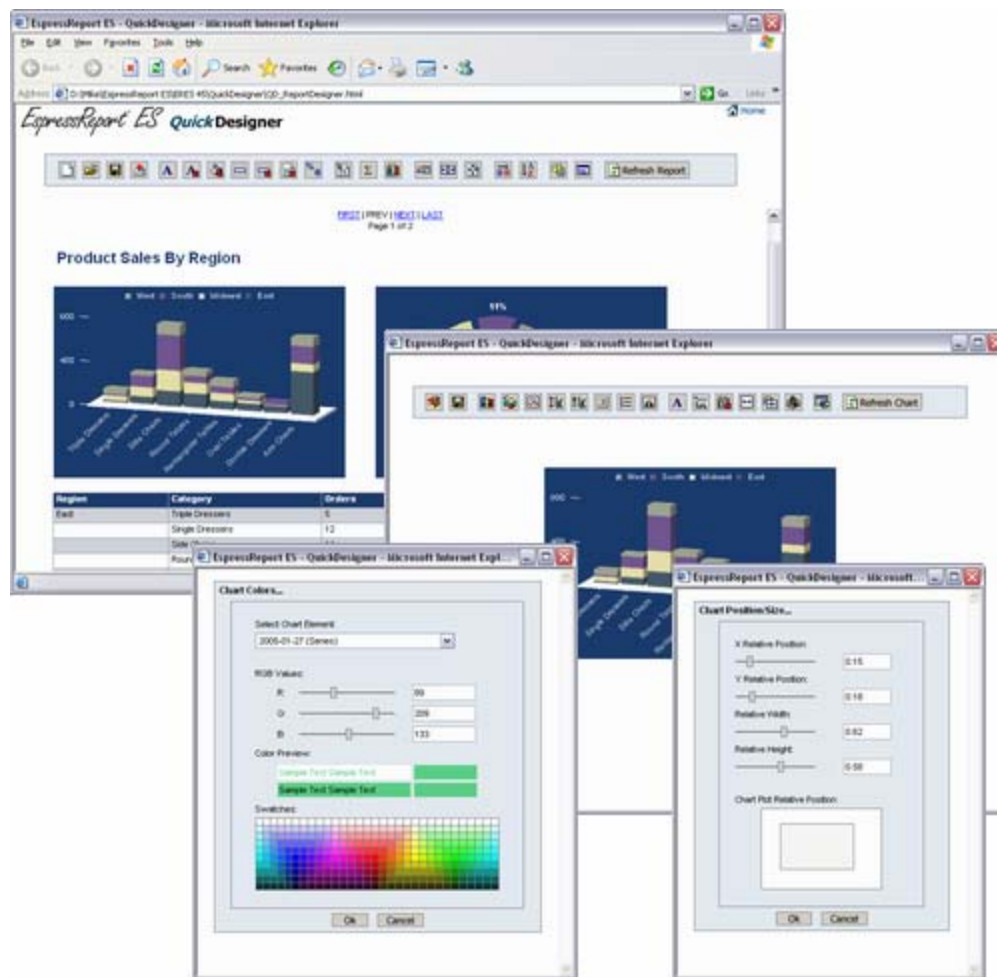
After selecting columns, user can apply sorting, grouping, filtering, and parameters in the conditions window. Intuitive condition wizards allow users to apply filters in a few clicks, selecting values from drop-down lists. From this window, users can preview the results of the query, and save it back to the data registry.



With the newly created query, or with any other data source, users can go to the report designer portion of the QuickDesigner. In this interface, users can add grouping/summaries to the report, modify sorting, and change column order. The intuitive toolbar at the top of the window allows users to perform basic report formatting, setting colors, fonts, and data formatting. Users can also add titles, labels, and dates/page numbers to the report.

A separate interface allows users to add and format charts. Charts can be added to reports, or created independently. The chart interface allows users to set chart size, colors, and other options. Users can also add and modify chart titles.

If additional modification is needed, users can easily switch back from the designer to the query interfaces to change the columns or filters for the report. Once a report is finished, users can stream the report back to the client in a number of formats like PDF or MS Excel. Finished reports can also be saved back to the server-side repository to be published and shared with other users.



The QuickDesigner is shipped with EspressoReport ES. The Data View interface is available with both EspressoReport and EspressoReport ES. For more information about these tools, please visit www.quadbase.com.